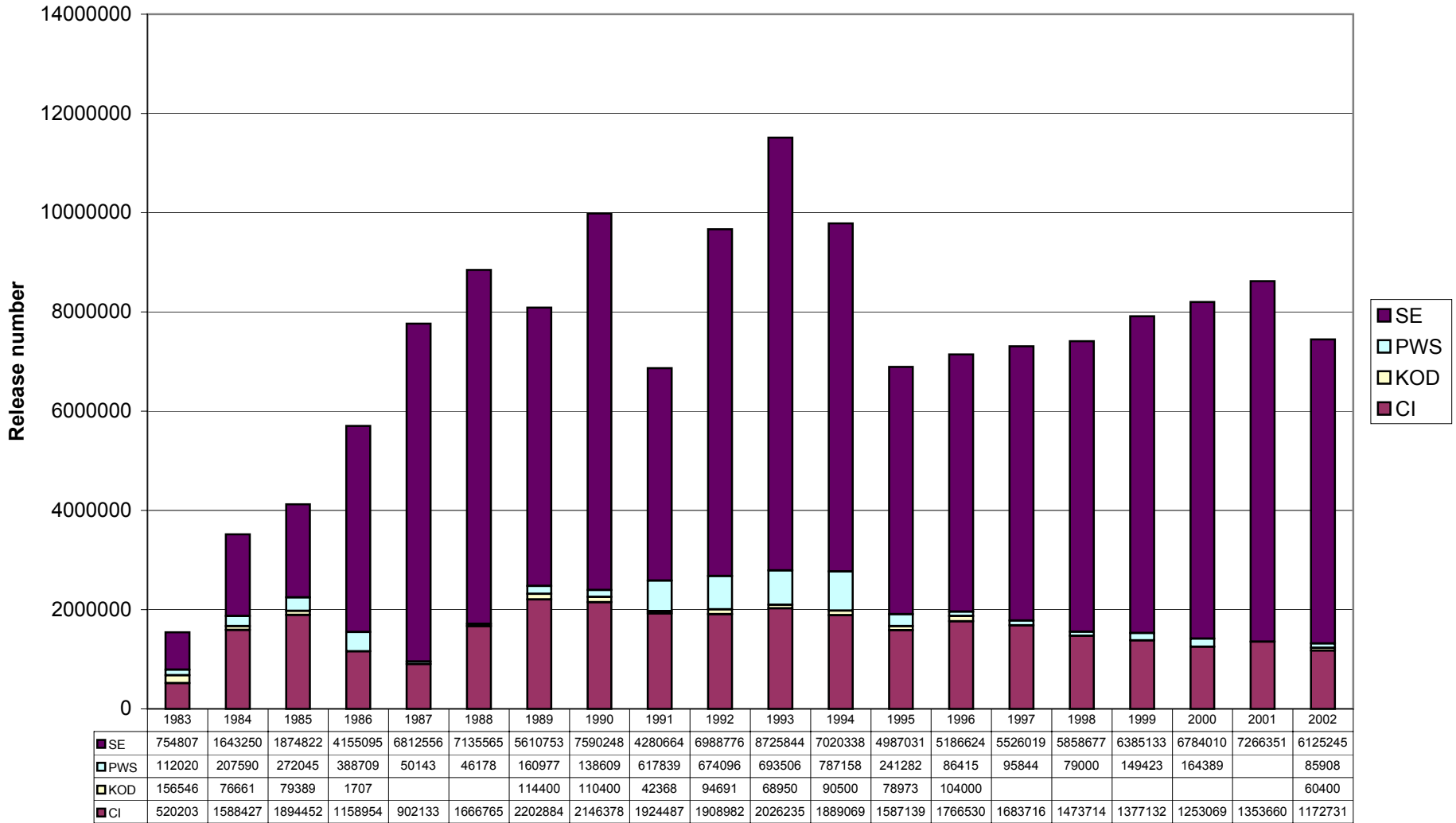
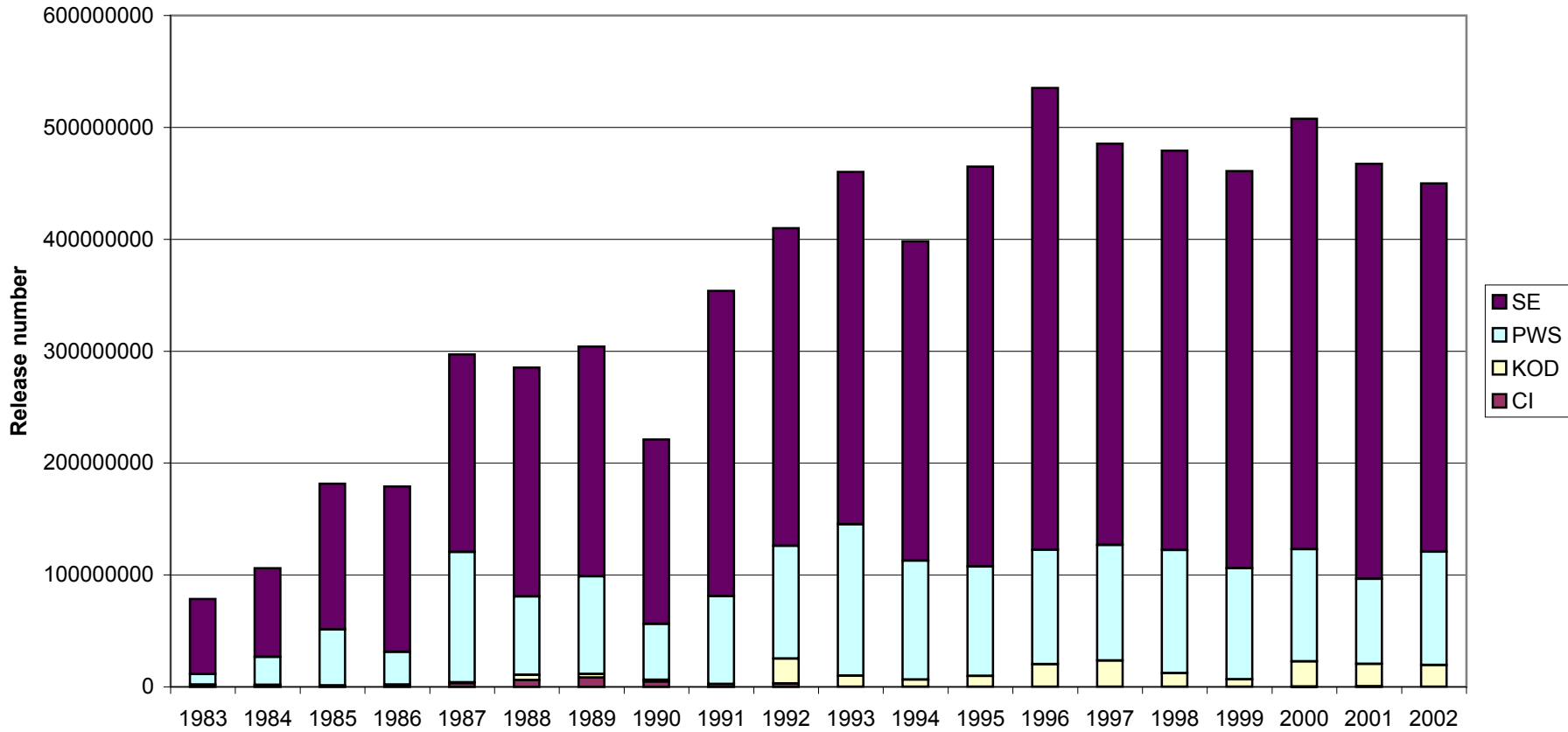


Alaska hatchery chinook salmon releases by region, 1983 - 2002

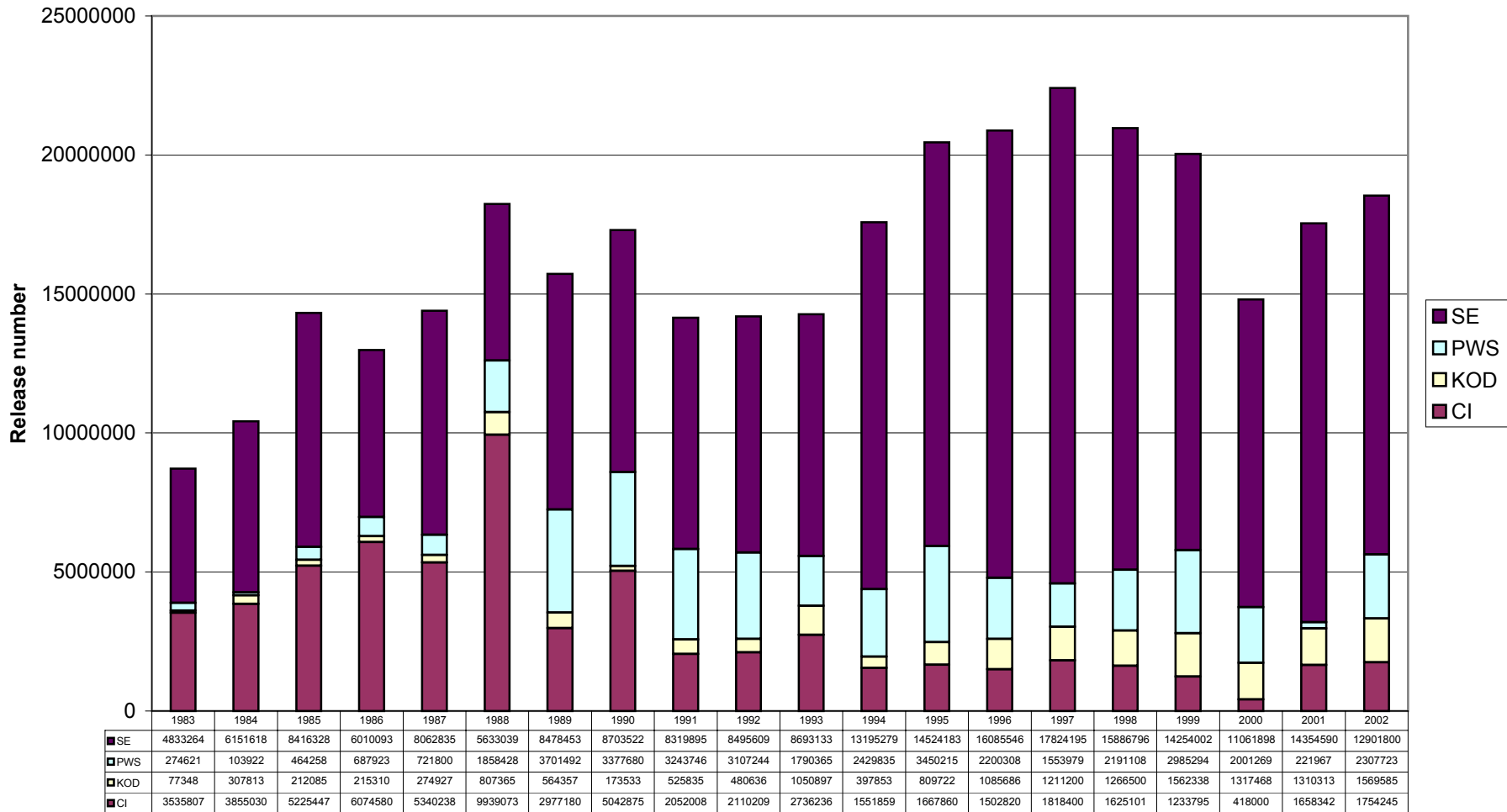


Alaska hatchery chum salmon releases by region, 1983 - 2002

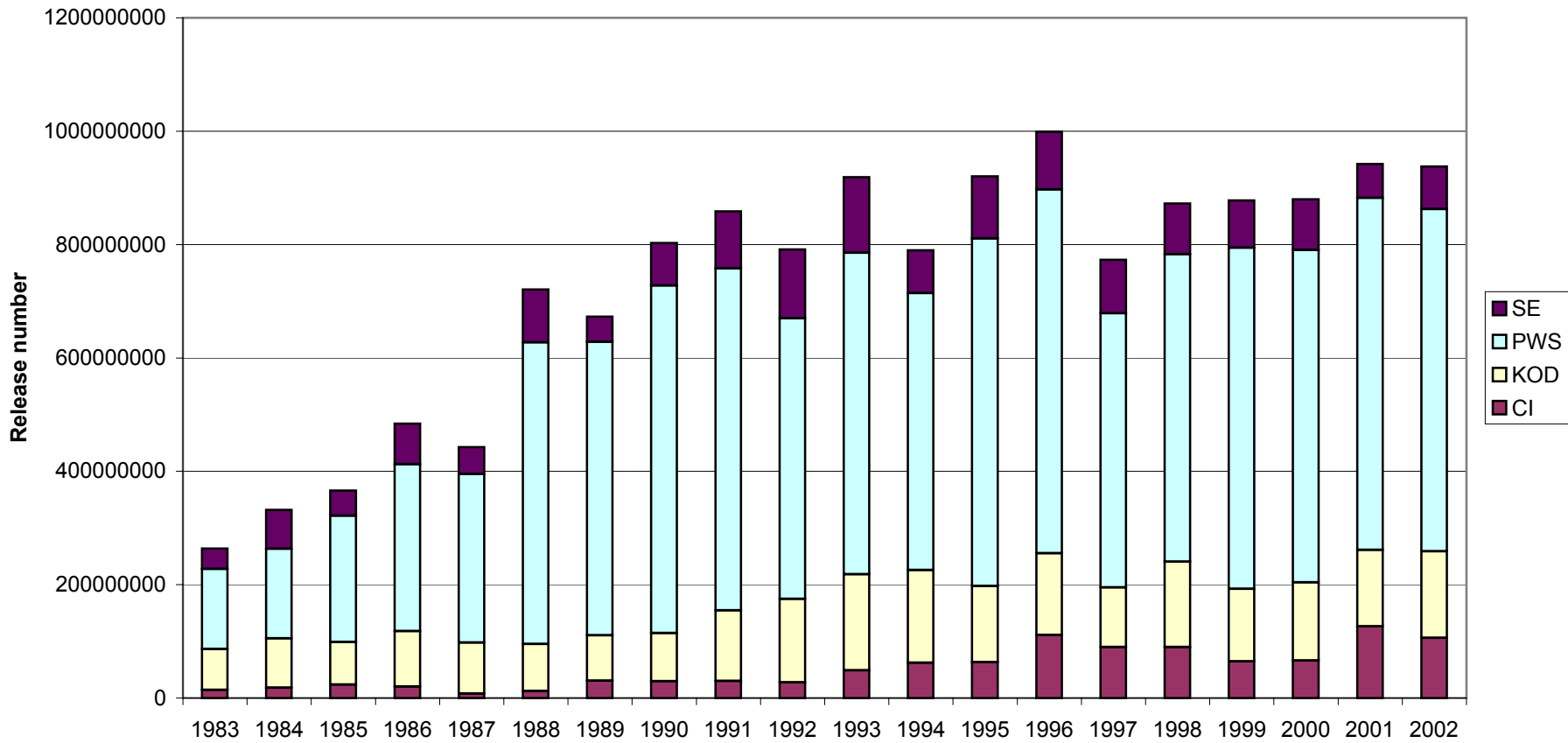


	1983	1984	1985	1986	1987	1988	1989	1990	1991	1992	1993	1994	1995	1996	1997	1998	1999	2000	2001	2002
SE	67103167	79081488	130367910	147751168	176581200	204496994	205366134	164867709	272835583	283823072	314852985	285574437	357469331	412804388	358746533	356822520	354668123	384671457	370818199	329196233
PWS	9261179	25195291	49909204	29257124	116579550	70202000	87232000	50080000	78450000	100643906	135181544	106196261	97859590	102314523	103197028	110066000	99294184	100351928	76116566	101255366
KOD	105058	630422	791176	422750	693176	4737587	3289878	1502501		22214472	10101986	6507497	9738069	20139843	23500000	12310000	6860000	22334640	20032140	19593070
CI	2019998	1054926	465584	1663622	3186700	5909200	8284393	4718557	2535000	3114793								335000	471770	

Alaska hatchery coho salmon releases by region, 1983 - 2002



Alaska hatchery pink salmon releases by region, 1983 - 2002



	1983	1984	1985	1986	1987	1988	1989	1990	1991	1992	1993	1994	1995	1996	1997	1998	1999	2000	2001	2002
SE	36242967	68454332	44387363	71480104	47488000	93144888	44479600	75372500	100657182	121058561	133547238	75865316	109918620	101905097	94654486	89544999	83203722	89148760	59735890	75479464
PWS	140968926	158232153	222582357	294542661	297162000	531921691	517473539	612923909	603519124	495490234	567320525	488559979	613158229	641675469	483704011	542383063	602128903	586607038	621062380	603412393
KOD	72124576	87065569	75108344	97773397	90017823	83316345	80502220	84907550	124148019	147145130	169551824	163192575	134104406	144045245	105000000	150600000	127685500	137702154	134823670	152990900
CI	14459614	18185563	23818500	20204600	7979467	12256853	30396433	29689702	30255000	27500000	48700000	62395000	63358000	111244975	89909986	90000000	64749000	66263726	126635207	105970985

Alaska hatchery sockeye salmon releases by region, 1983 - 2002

